

DRAWING NUMBER
52/64

DRAWING NUMBER

DRAWING NUMBER

DRAWING NUMBER

GLENEAGLES PLAT SEVEN

PARCEL D, PART OF COVENTRY, A P.U.D.
SITUATE IN SECTION 21, TOWNSHIP 46 SOUTH, RANGE 42 EAST,
PALM BEACH COUNTY, FLORIDA, BEING A REPLAT OF A PORTION
OF GLENEAGLES PLAT ONE, (P.B. 50, P. 63 - 65).

64

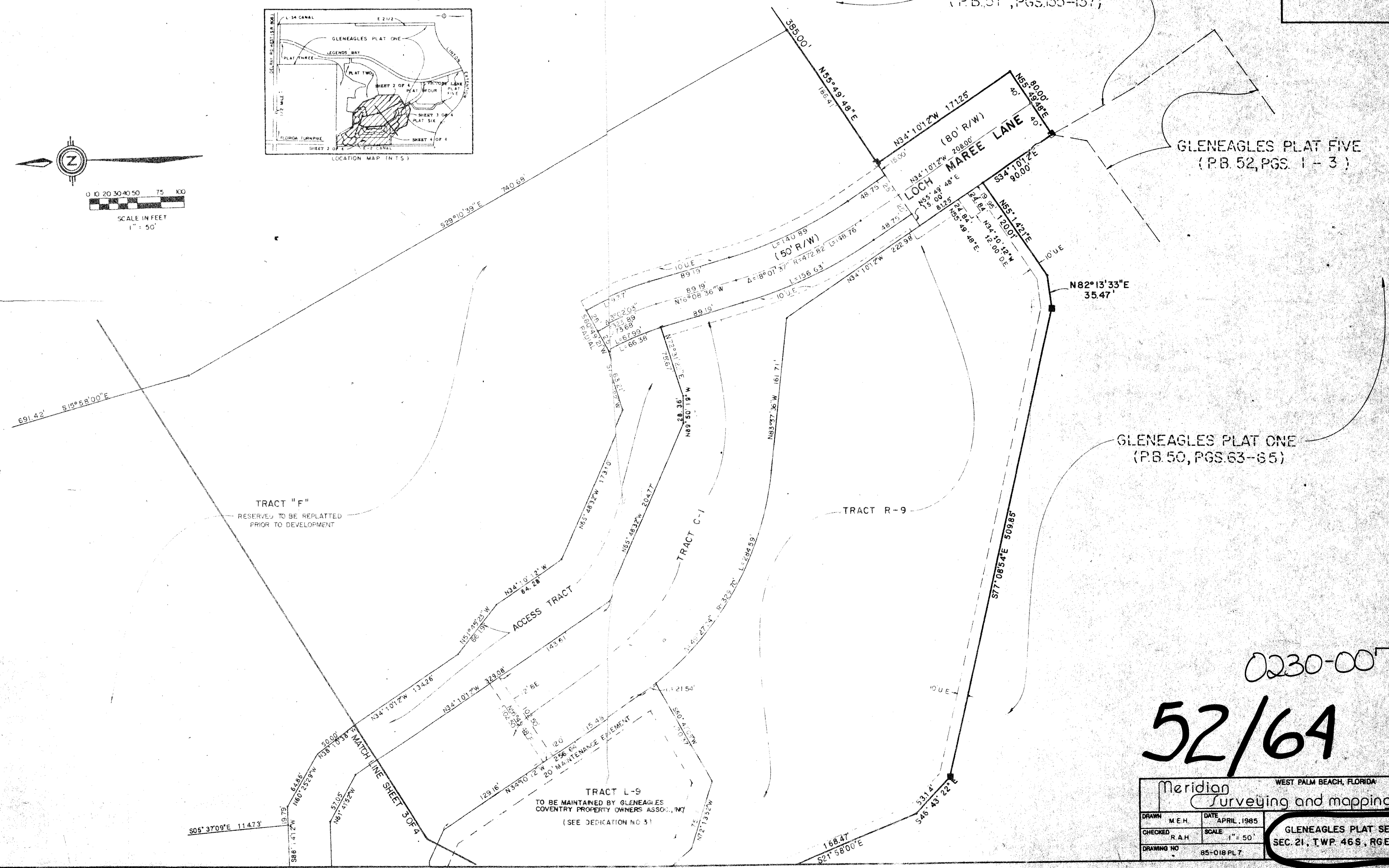
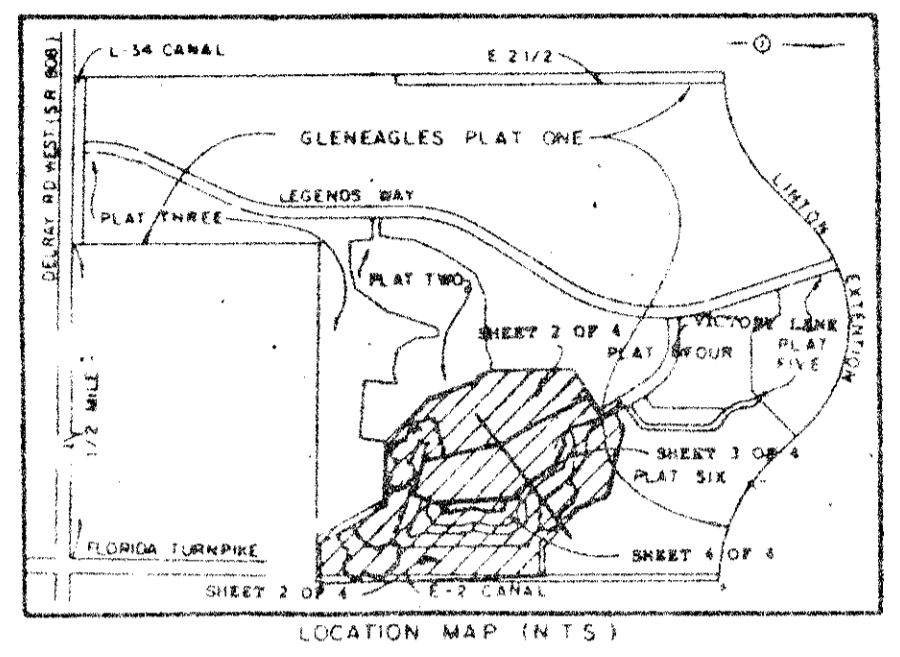
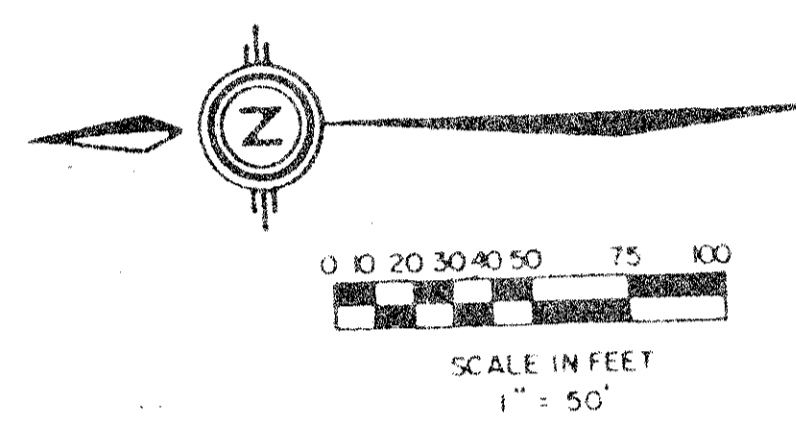
STATE OF FLORIDA
COUNTY OF PALM BEACH
THIS PLAT WAS FILED FOR
RECORD AT _____
THIS _____ DAY OF _____
AD, 1985 AND DULY RECORDED
IN PLAT BOOK _____ ON PAGES
_____ AND _____
BY: JOHN B. DUNKLE, CLERK
D.C.

SHEET 4 OF 4

GLENEAGLES PLAT FOUR
(P.B. 51, PGS. 135-137)

GLENEAGLES PLAT FIVE
(P.B. 52, PGS. 1-3)

GLENEAGLES PLAT ONE
(P.B. 50, PGS. 63-65)



0230-007

52/64

Meridian Surveying and mapping inc. WEST PALM BEACH, FLORIDA

| | | | |
|-------------|-------------|--|-------------|
| DRAWN | M.E.H. | DATE | APRIL, 1985 |
| CHECKED | R.A.H. | SCALE | 1" = 50' |
| DRAWING NO. | 85-018 PL 7 | GLENEAGLES PLAT SEVEN SEC. 21, TWP. 46 S., RGE. 42 E. | |

PLAN HOLD CORPORATION • IRVINE, CALIFORNIA
RECORDED BY NUMBER 07548